



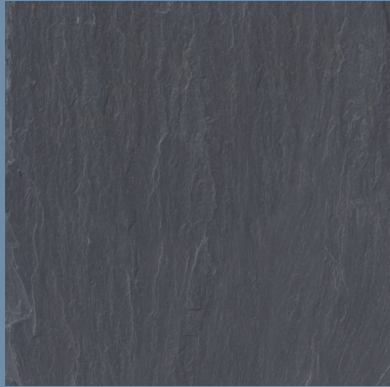
NATURAL VERMONT SLATE,
THE BEAUTIFUL AND DURABLE CHOICE
FOR INTERIOR AND EXTERIOR
FLOORING.

Slate Flooring

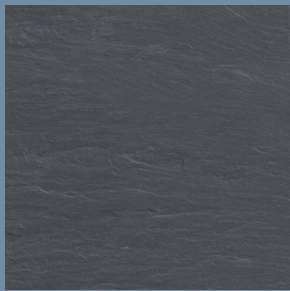
STANDARD SIZES & PATTERNS All sizes sawn less 3/8" to allow for grout joints

Natural Cleft/Gauged Slate Flooring.

In addition to the patterns shown at right, slate is available in the following uniform single sizes. (Last dimension shown is the minimum thickness available.)



24" x 24" x 1/2"



18" x 18" x 3/8"



12" x 12" x 1/4"

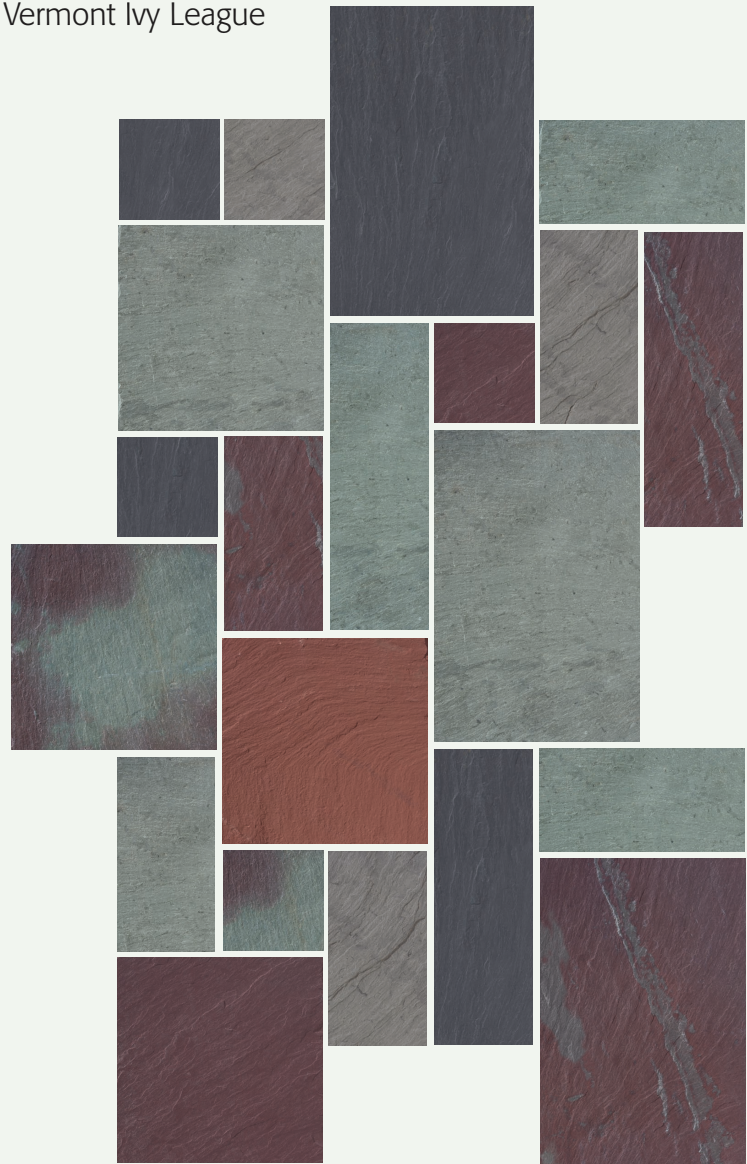


9" x 9" x 1/4"



6" x 6" x 1/4"

Vermont Ivy League



Vermont Ivy League

Natural Cleft Face

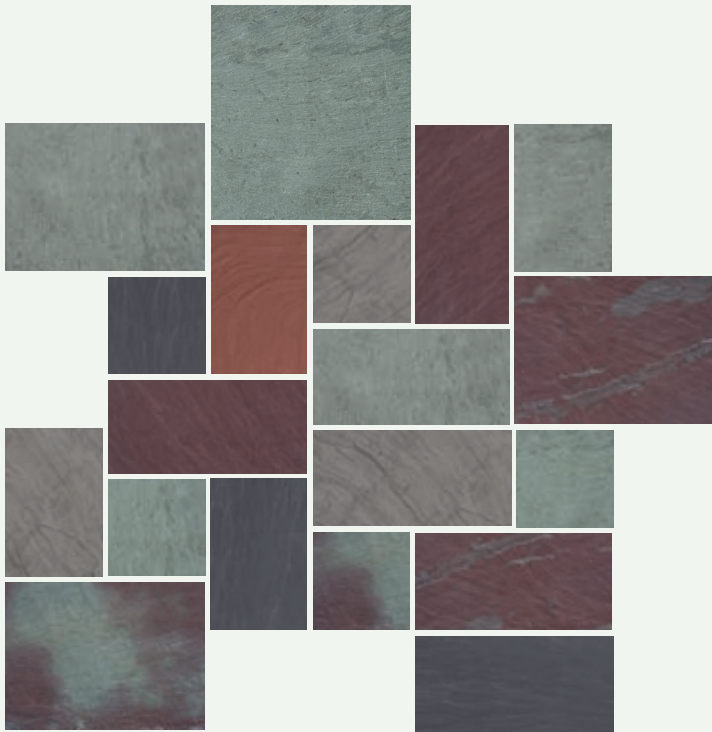
15 Square Feet

Available in mingled shades with red as shown, or any solid colors.

- 6 x 6 – 5 Pieces
- 6 x 18 – 3 Pieces
- 6 x 12 – 6 Pieces
- 12 x 18 – 3 Pieces
- 12 x 12 – 4 Pieces

Slate tiles in this pattern are available in 3/8" or thicker.

Vermont Estate



Vermont Estate

Natural Cleft Face

10 Square Feet

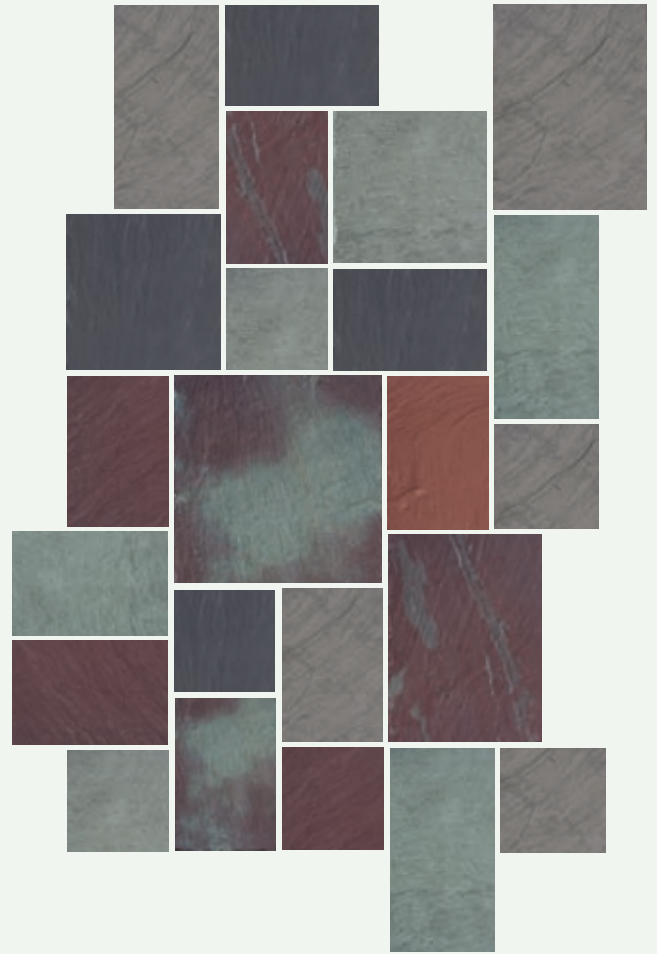
Available in mingled shades with red as shown, or any solid colors.

- 6 x 6 – 5 Pieces
- 6 x 9 – 5 Pieces (1 piece filler)
- 6 x 12 – 7 Pieces
- 12 x 9 – 3 Pieces
- 12 x 12 – 1 Piece
- 6 x 3 – 1 Piece (filler)

Slate tiles in this pattern are available in 1/4" or thicker.



Vermont Country Cottage



Vermont Country Cottage

Natural Cleft Face

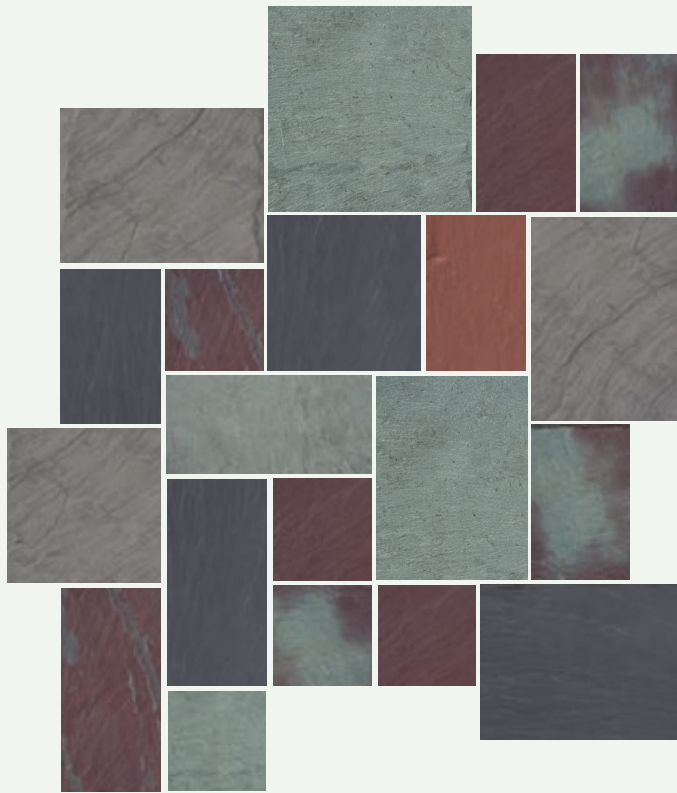
10 Square Feet

Available in mingled shades only, with or without red.

- 6 x 6 – 6 Pieces
- 6 x 9 – 9 Pieces
- 6 x 12 – 3 Pieces
- 9 x 9 – 2 Pieces
- 12 x 9 – 2 Pieces
- 12 x 12 – 1 Piece

Slate tiles in this pattern are available in 1/4" or thicker.

Vermont Elegance



Vermont Elegance

Natural Cleft Face

10 Square Feet

Available in mingled shades as shown with red as shown, or any solid colors.

6 x 6 – 5 Pieces

6 x 9 – 5 Pieces

6 x 12 – 4 Pieces (1 piece filler)

9 x 9 – 2 Pieces

12 x 9 – 4 Pieces

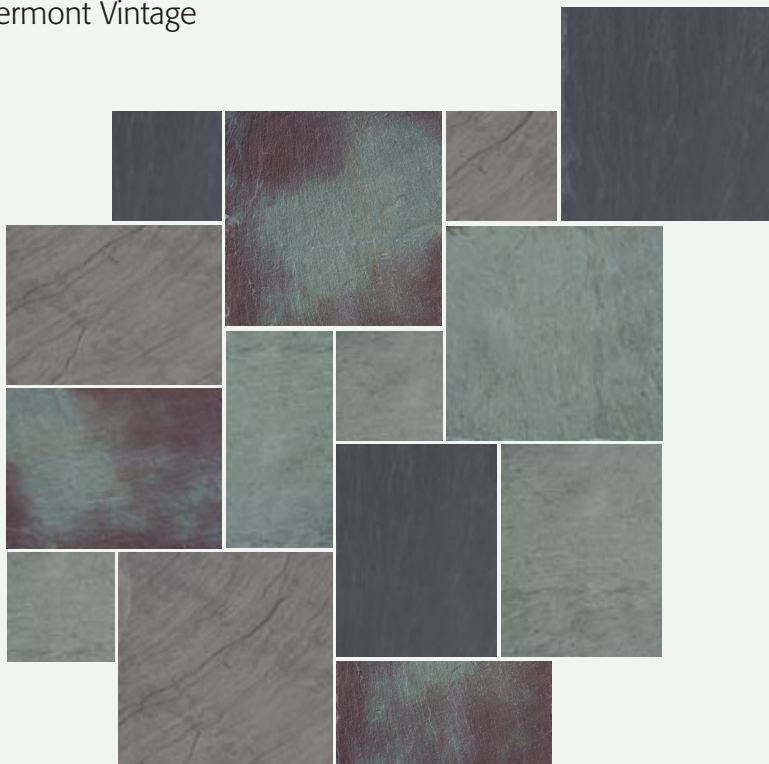
12 x 12 – 1 Piece

12 x 3 – 1 Piece (filler)

9 x 3 – 1 Piece (filler)

Slate tiles in this pattern are available in 1/4" or thicker.

Vermont Vintage



Vermont Vintage

Natural Cleft Face

36 Square Feet

Extra large pattern. Available in Mottled Purple, Grey Green, Dark Green, Grey and Black.

12 x 12 – 4 Pieces

12 x 24 – 2 Pieces

18 x 24 – 4 Pieces

24 x 24 – 4 Pieces

Slate tiles in this pattern are available in 1/2" or thicker.



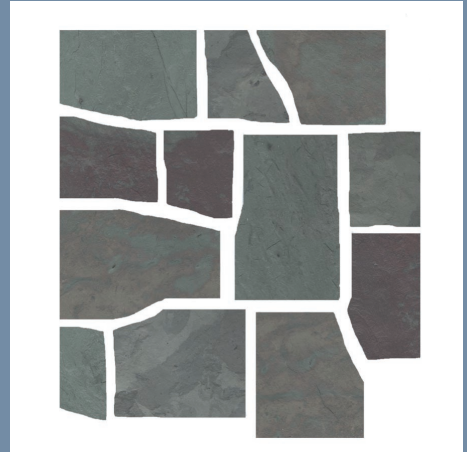
VERMONT IRREGULAR SLATE FLAGSTONE,
IDEAL FOR PATIOS, WALKWAYS OR
STEPPING STONES.

Typical installations are over sand and aggregate or concrete, but due to its resistance to acid, slate may be laid directly on soil. Indoor installations are possible over a medium bed-type mortar application.

Valley Run Grade

3/4" to 1" Thick

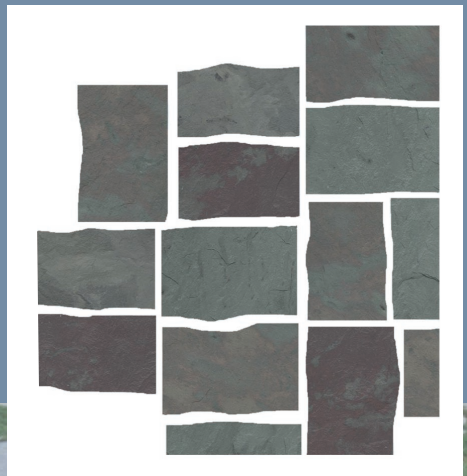
With a more irregular shape, saw cut on zero to two sides, this is our most economical grade and provides a more rustic look with a more random pattern.



Quarry Run Grade

3/4" to 1" Thick or 3/8" to 1/2" Thick

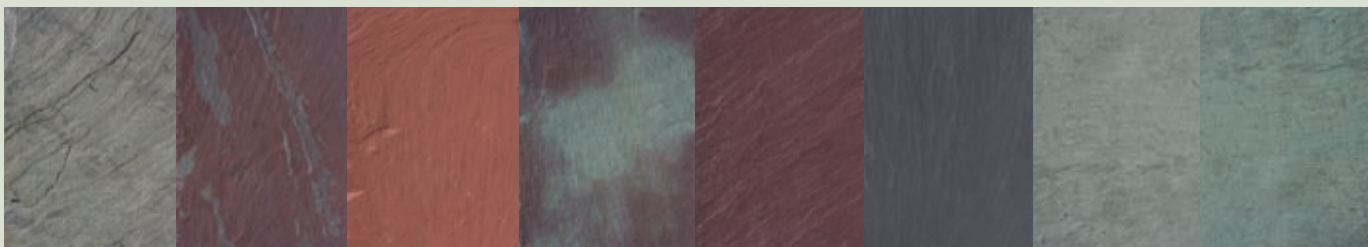
Parallel saw-cuts across the grain provide this slate with a more rectangular and uniform shape, which is sculpted along the grain at 12" to 14", with square edges and uniform thickness.



Flagstone



AVAILABLE COLORS:



GRAY

MOTTLED
GREEN-PURPLE

RED

VARIEGATED
PURPLE

ROYAL PURPLE

BLACK

GREEN

DARK GREEN



68 East Potter Ave., Granville, NY 12832 • 11742 Jones Rd., Sanger, TX 76266
866-USA-SLATE • www.evergreenslate.com • sales@evergreenslate.com